

The Strategy of Equality: Achieving a Level Playing Field in Society

In today's rapidly evolving world, the pursuit of equality has become paramount. Equality encompasses a fundamental belief that all individuals, regardless of their race, gender, sexual orientation, socioeconomic status, or any other distinguishing characteristics, deserve the same rights, opportunities, and treatment. Achieving equality, however, is not merely a noble aspiration; it requires a comprehensive strategy that addresses the systemic barriers and prejudices that perpetuate inequality.

Understanding Inequality: A Multifaceted Challenge

Inequality manifests itself in various forms, creating a complex and multifaceted challenge. Economic inequality, for instance, refers to the unequal distribution of wealth, income, and resources within a society. This disparity can lead to significant disparities in living standards, access to education, healthcare, and other essential services.



The Strategy of Equality: Redistribution and the Social Services (Routledge Library Editions: Welfare and the State Book 13) by Julian Le Grand

★★★★☆ 4.5 out of 5

Language : English
File size : 2194 KB
Text-to-Speech : Enabled
Enhanced typesetting : Enabled
Word Wise : Enabled
Print length : 197 pages
Screen Reader : Supported



Social inequality, on the other hand, encompasses differences in social status, power, and privilege based on social factors such as class, race, or gender. Individuals from marginalized groups often face discrimination, prejudice, and limited access to opportunities, perpetuating a cycle of disadvantage.

Inequality also extends to the realm of political participation. When certain groups are underrepresented in decision-making processes, their perspectives and interests may be overlooked or ignored, leading to policies that do not adequately address their needs.

The Case for Equality: A Just and Equitable Society

The pursuit of equality is not only a matter of social justice but also a fundamental prerequisite for a thriving and inclusive society. When individuals have equal opportunities to succeed, they can contribute their full potential to the collective well-being. A more equal society fosters innovation, creativity, and economic growth.

Furthermore, equality promotes social cohesion and reduces tensions between different groups. When people feel valued and respected, they are less likely to engage in conflict or violence. A society that values equality is a more harmonious and stable environment for all its members.

The Strategy of Equality: A Multi-Pronged Approach

Achieving equality requires a multi-pronged strategy that addresses the root causes of inequality and promotes equal opportunities for all. This

strategy should encompass:

- **Legal and Policy Framework:** Enacting and enforcing laws that prohibit discrimination and promote equal opportunities in all spheres of life, including education, employment, housing, and healthcare.
- **Education and Awareness:** Raising awareness about the importance of equality and challenging stereotypes and prejudices that perpetuate inequality. This includes incorporating diversity and inclusion into educational curricula and promoting media representations that challenge societal norms.
- **Economic Empowerment:** Investing in programs that support economic mobility and reduce wealth disparities. This includes providing access to education, job training, and affordable housing for marginalized communities.
- **Political Inclusion:** Promoting the participation of underrepresented groups in decision-making processes. This can be achieved through initiatives such as affirmative action, quotas, and community engagement programs.
- **Social Support:** Establishing social support systems that provide essential services and assistance to individuals and communities facing barriers to equality. This includes access to healthcare, childcare, and legal aid.

Implementation and Monitoring: A Collective Responsibility

The implementation and monitoring of an equality strategy require collective action and commitment from all sectors of society. Governments, businesses, educational institutions, and civil society organizations all have

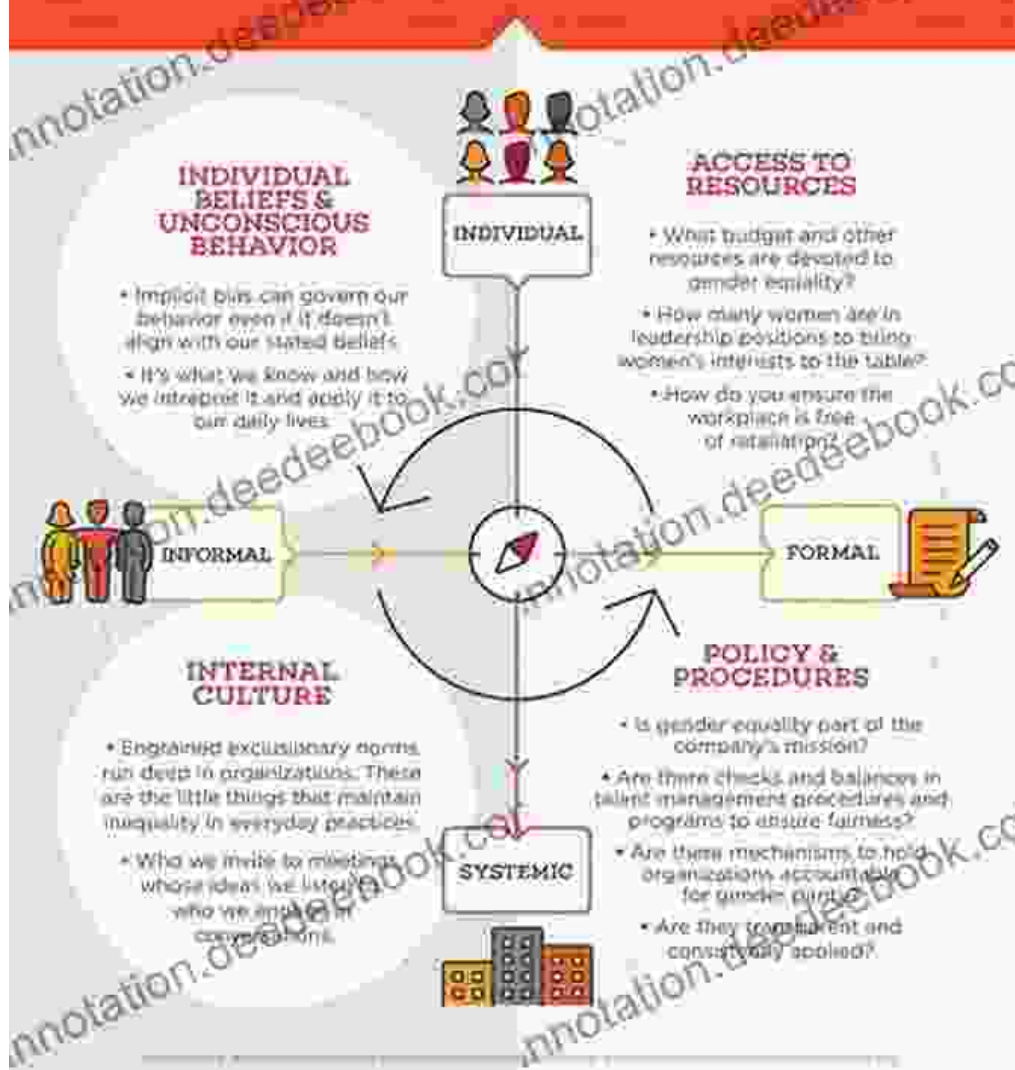
a role to play in promoting equality and ensuring that everyone has a fair chance to succeed.

Regular monitoring and evaluation are crucial to assess the effectiveness of equality initiatives and make necessary adjustments. This includes collecting data on key indicators of inequality, such as income distribution, educational attainment, and political representation, and using this data to inform policy and program development.

: The Journey Towards Equality

Achieving equality is an ongoing journey that requires sustained effort and commitment. By implementing a comprehensive strategy that addresses the root causes of inequality and promotes equal opportunities for all, we can create a more just and equitable society where everyone has the chance to reach their full potential. The pursuit of equality is not merely an aspiration; it is a fundamental investment in a brighter and more inclusive future for all.

The dimensions of GENDER EQUALITY



The Strategy of Equality: Redistribution and the Social Services (Routledge Library Editions: Welfare and the State Book 13) by Julian Le Grand

★★★★☆ 4.5 out of 5

Language : English

File size : 2194 KB

Text-to-Speech : Enabled

Enhanced typesetting : Enabled

Word Wise : Enabled
Print length : 197 pages
Screen Reader : Supported

FREE

DOWNLOAD E-BOOK



Your Mental Health and Wellness in the Post-Pandemic Era: A Comprehensive Guide to Thriving in the New Normal

The COVID-19 pandemic has left an undeniable mark on our collective mental health. The unprecedented stress, isolation, and uncertainty of the past few...



The Music of Hope, Dreams, and Happy Endings: Five-Finger Piano for the Soul

In the realm of beautiful music, there exists a captivating style that transcends the boundaries of technical brilliance and speaks directly to the human spirit. Five-finger...